

R. 574, U.S. America to Jos. E. Hodson,

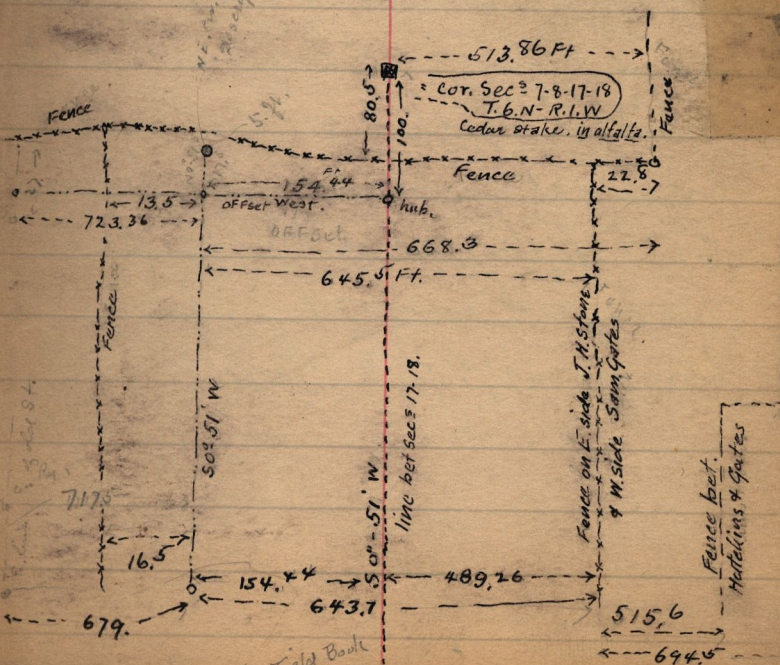
S^{1/2} Sec. 6, T. 6, N. R. 2, W.

2-427 Jos. E. Hodson to Monnie Skeen,
 Pt. S. E^{1/4} Sec. 6, T. 6, N. R. 2, W. Pt. S. E^{1/4} Cor, 90' x
 W 21.45 ch. N 1° 21' E, 3.95 ch. E 10.72 ch. N 1° 20' E
 13.82 ch. E 10.32 ch. S 17.77 ch to Cor

Pioneer-Electric Power Co. has Rt. of W.

20-324 Mtg to Middlesex Banking Co.

March, 20-1898.



See also Field Book H. P. 127